

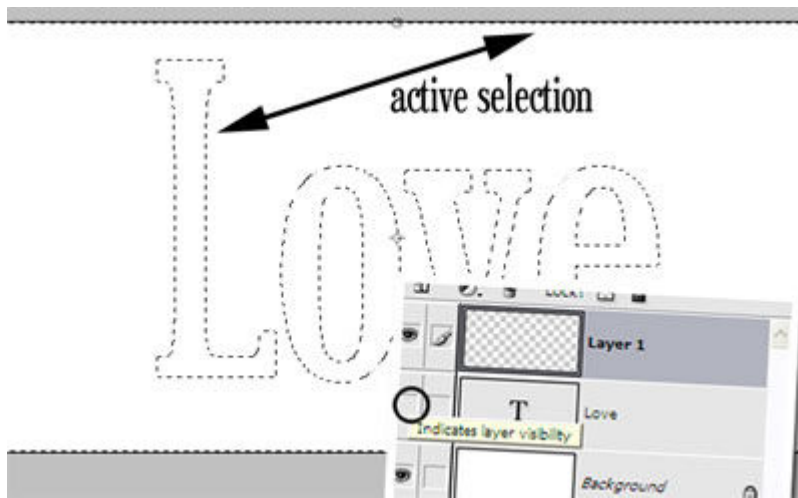
## Masked Painted Text Effect for Photoshop/Photoshop Elements By LaWanna Desjardin

One of my favorite ways to personalize my pages is to use a unique text effect, usually in the title of the page. I'm going to show you one of my favorite techniques for titling a page –using a masked paint effect. For those among you who are more adventurous, I've also taken it a step further; by showing you how to use layer masks (Yes, PSE can do layer masks!) to get this same effect and how layer masks allow you to manipulate the layer even more. You can see this finished effect in this layout, You Make Me Smile.

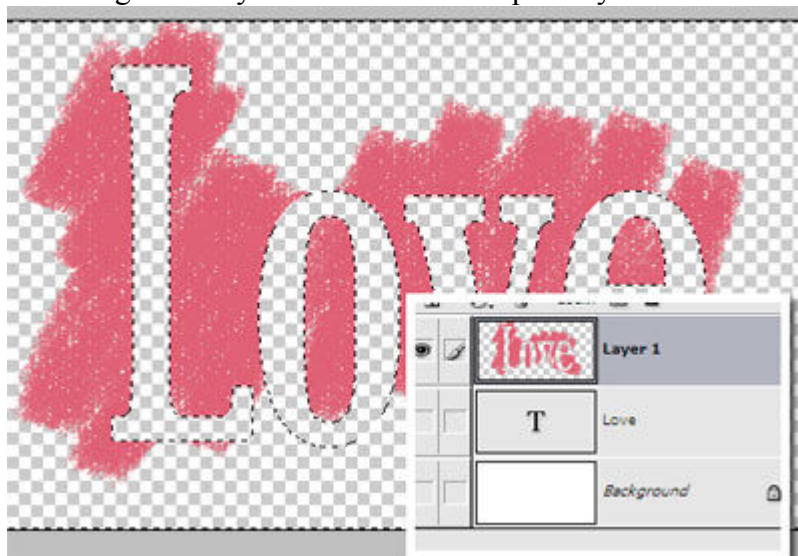


### Masked Paint Text Effect: Selection Method

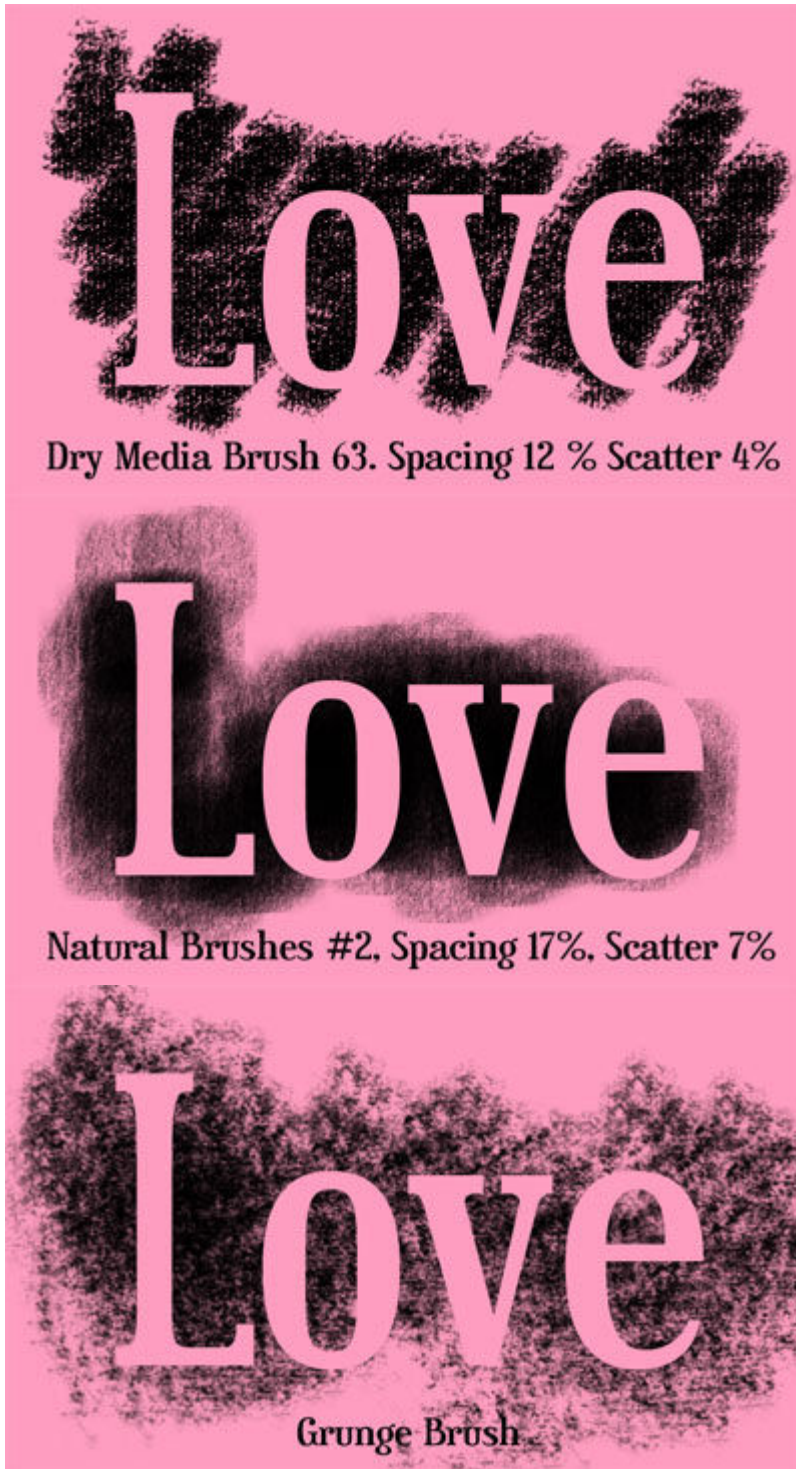
1. First you will want to type your text on new text layer. Then Cntrl+Click on the layer thumbnail to select the word(s) you typed. You should see marching ants around the word.
2. Now go to Select/Inverse to reverse the selection. Hide your text layer by clicking the little eye icon in the layer's palette.
3. Create a new layer by going to Layer>New>Layer. Make sure this new blank layer is active in your layers palette. You will see something like this in your layers palette and canvas.



4. Next you are going to choose your brush tool and choose a brush. Different brushes will yield different effects. I am using Dry Media Brushes #63. Now with the selection active, simply click and drag to on the new blank layer. The paint will appear only in selected areas. In the image below, I have hidden the background layer to reveal the transparency.



5. Like I said different brushes will yield different effects. Here are three different effects. The first two use brushes available with Photoshop Elements and Photoshop. The last uses a grunge brush I created.



**Masked Paint Text Effect: Layer Mask Method**

Now I'm going to show you how to do this same technique using layer masks. Why? Using the layer mask technique will allow you to manipulate the layer even more creating even more cool effects.

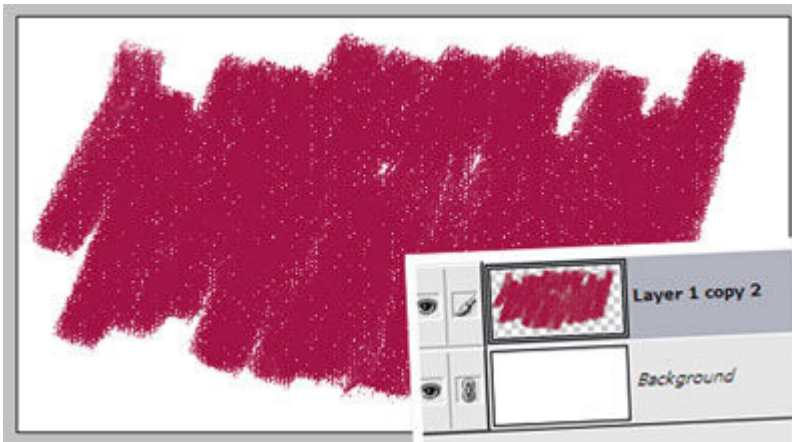
Photoshop Elements does not have a built in layer mask tool. But, you can download a PSE-compatible layer mask action along with some other great PSE Actions here at Grant's Tools:

<http://www.cavesoffice.org/~grant/Challenge/Tools/Files.html>

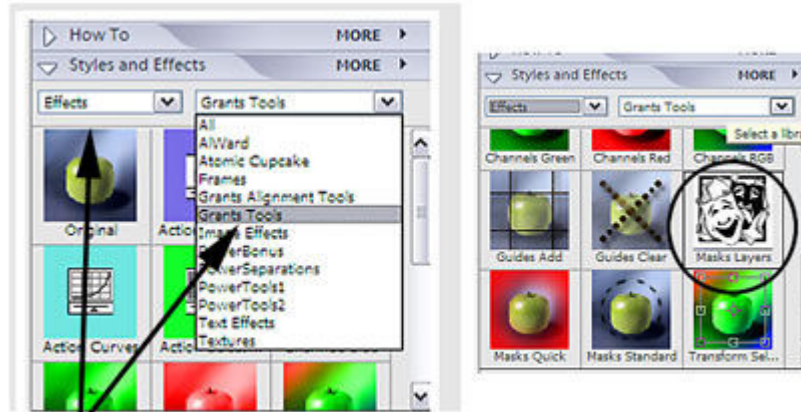
These tools are amazing for PSE. While some – such as curves – will not work with newer versions of PSE, others like the alignment tools and the layer mask tool are indispensable! Just follow Grant's Installation Instructions.

One of the coolest things about layer masks in Photoshop or in Photoshop Elements is that you can manipulate the mask separately from the main layer. That means that you can apply a filter to the mask and that will affect how the main layer will look.

1. For this version of the effect, we are going to create our paint layer first. So create a new layer, and select a brush from the palette. For this tutorial, I used Dry Media Brush #63. Click and drag the mouse to paint on the new layer.

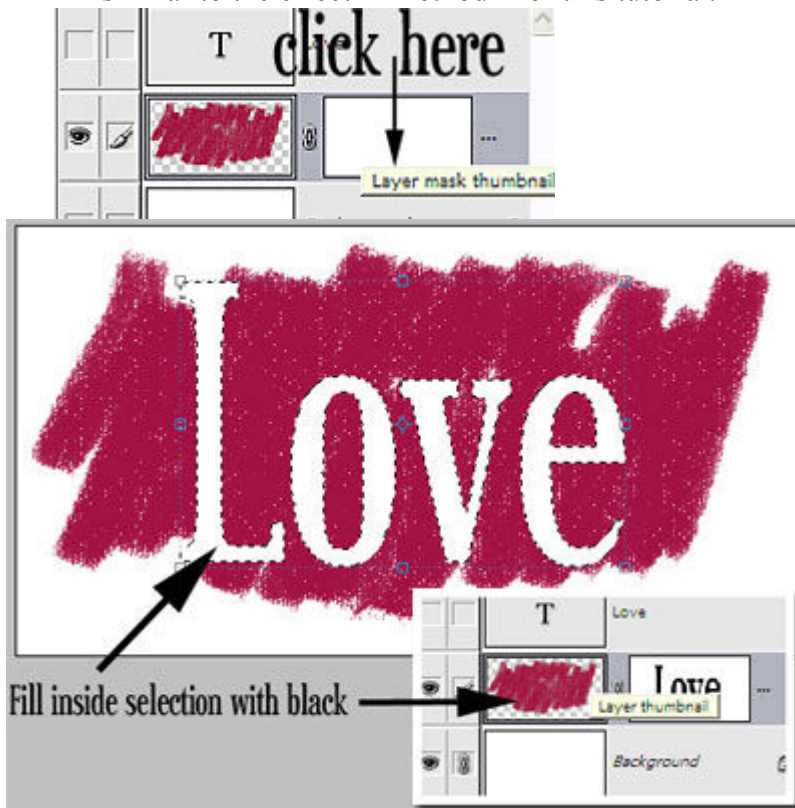


2. Now you need to apply a layer mask to the paint layer. We'll use the layer mask in a moment, but for now you won't see any changes to the canvas. You will see the layer mask appear in the layers palette though.
  - a. If you are working with Grant's Tools in PSE, they will appear in the styles and effects palette. Choose effects from the first drop-down menu and Grant's Tools from the second drop down menu. Then choose layer mask from the effects menu. It looks like a pair of Drama Masks in the drop down menu.



### apply layer masks with Grant's Tools

- b. If you are working with PSCS, click the add layer mask icon on the layers palette or go to Layer>Layer Mask>Reveal All.  
(Now forget about the layer mask for just a moment.)
3. On a new layer, type the text you want to use as your mask. Cntrl+Click on the *layer thumbnail* to select the text and put marching ants around it. For now turn off the layer visibility, by clicking the eye-icon in the palette.
4. With the selection still active, select the paint layer. Click on the *layer mask thumbnail* to activate the mask. Using solid black as your foreground color, fill the selection area (the area surrounded by marching ants) with your paint bucket. On your canvas, you should see the text area disappear from the paint layer, similar to the effect in method A of this tutorial.



Now we are going to add some further special effects to our new masked paint layer. Now you will see the fun of layer masks.

5. Make sure the paint layer is selected. Now click on the layer mask thumbnail as before. (If you want to see the layer mask on the canvas, click Alt+Layer Mask Thumbnail. Repeat to see the main layer.)
6. Now go to the Filter Gallery, under Filter>Filter Gallery. We are going to apply some effects to the paint layer mask. Remember that layer masks respond to shades of gray. White will reveal parts of the main paint layer and black will hide parts of the main paint layer. Grays will result in varying opacities in the main layer.
  - a. Under Distort. Choose Glass. Settings should be:  
Distortion>1;  
Smoothness>2;  
Texture>Frosted;  
Scaling>94  
*Don't click OK yet.* You can already see the effects of the filters on the layer mask in the preview window.
  - b. Now Choose New Effect Layer (the small square icon on the bottom).  
Select Spatter from the Brush Strokes menu. Settings should be Spray Radius>15;  
Smoothness>5
  - c. Add another New Effect Layer.  
Select Crosshatch from the Brush Strokes Menu. Settings should be:  
Stroke Length> 26  
Sharpness>1  
Strength>1

Now click OK. Here is the finished product. Play around with the settings in the Filter Gallery for more effects.

