



## Install Layer Styles in Photoshop Elements 6

by LaWanna Desjardin

[www.desjardindigitaldesigns.com](http://www.desjardindigitaldesigns.com)

[Ldesjardin@gmail.com](mailto:Ldesjardin@gmail.com)

If you are new to digital scrapbooking, or to the software package Adobe Photoshop Elements 6, you may not be aware of the versatility and wide capability of layer styles, sometimes called styles. Multiple styles can be applied to a layer, removed one at a time or together, all the while leaving that layer complete editable. Styles can even be applied to text layers and vector layers, allowing the content to be changed repeatedly.

While it may not sound like much on paper, in practice it is one of the features that sets Photoshop and Photoshop Elements apart from other image editors. In the image below, various styles have been applied to the same text layer, including bevel, shadow, and visibility. Initially all three layers had the same effects applied. In the first example, the shadow was removed. In the second example, the bevel was removed. And in the last example, the ghosted visibility was removed. All with a couple of clicks of a button. In addition, the text is easily edited during the entire process.

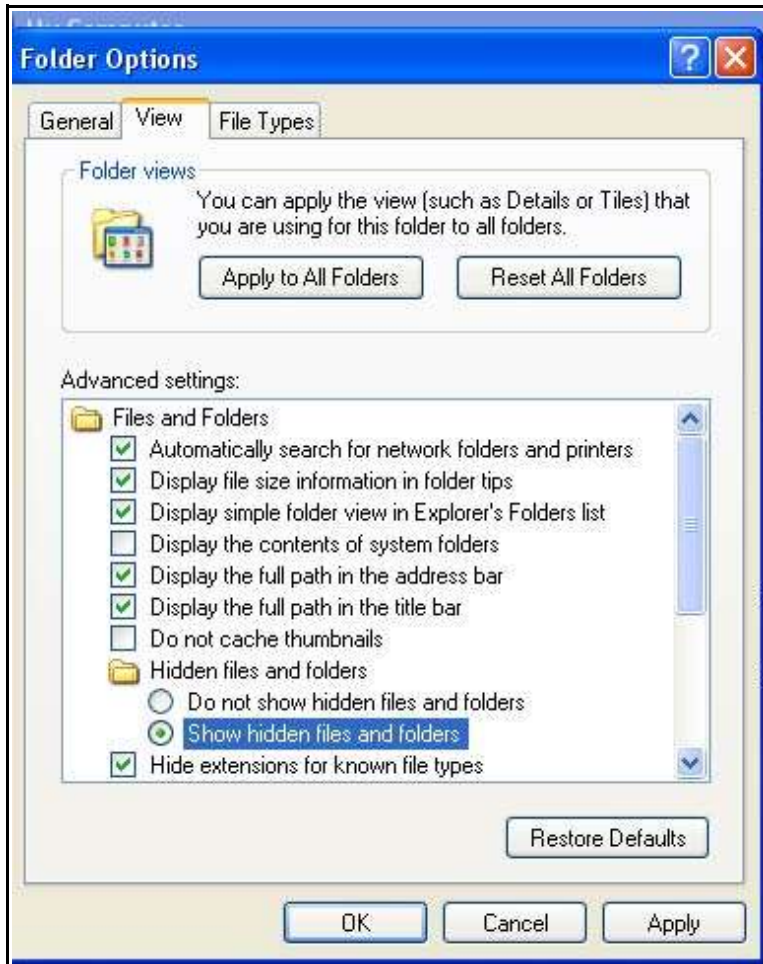


In this tutorial, I'm going to show you how to install new layers style, widely available for download. They are available from a number of resources, but one of the most popular is Adobe Exchange, where users of Photoshop exchange resources they've created in Photoshop. Many of these style can also be used in Photoshop Elements. Best of all, they are free for personal use. The style I'm working with here was downloaded from Adobe Exchange. *It is important to note, however, that not all styles can be used*

in PSE so you may want to find out first if a style is compatible before purchasing it.

### First things first. . .

For PSE 6, the folder where you will place the ASL file is in a hidden folder. This means that you will need to see the folder before you can proceed. First go to Start Menu>My Computer. On the Window Toolbar, select Tools>Folder Options. Select the View tab. You should see something like this:



Go down to the section, Hidden files and folder. Select the option, Show Hidden files and Folders. Now Choose OK.

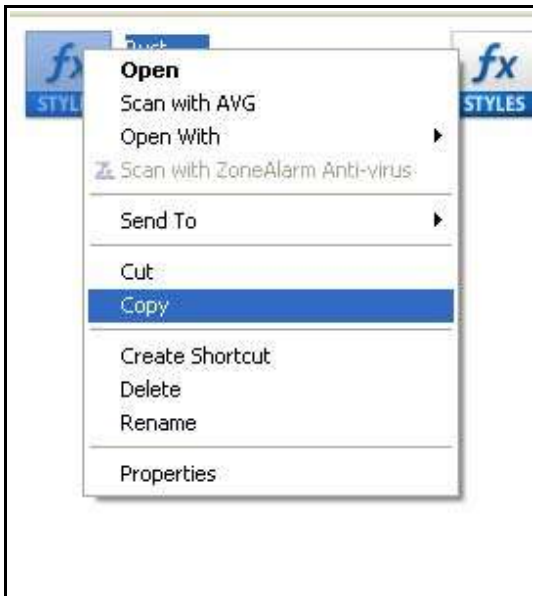
## Let's Go Already

Okay now that we can see our hidden folders, we can move forward. First of all make sure Photoshop Elements is closed. Any styles that are installed will not be visible until the program is restarted.

You may be working with a set that has needs to be extracted first. Go ahead and extract the file. In Windows, you can do this by right-clicking the file and choosing Extract from the options. Follow the prompts until the process is complete. Now you have the uncompressed file to work with. The layer style is an ASL file and the thumbnail looks like the image to the right when displayed in your window.



1. First Navigate to the folder where you have downloaded and extracted the layer style. Select the file, right-click and choose Copy to place the Style File in your system clipboard.



2. Now Navigate to the appropriate Styles folder on your computer. The path is:  
C:\Documents and Settings\All Users\Application Data\Adobe\Photoshop Elements\6.0\Locale\en\_US\Photo Creations\layer styles

Here's how you get there:

- a. Go to Start Menu>My Computer.
- b. Select Local Disk(C:), then Documents and Settings.
- c. Choose All Users, then Application Data.
- d. Choose Adobe, then Photoshop Elements.
- e. Choose 6.0, then the Locale folder.
- f. Choose en\_US, then Photo Creations.
- g. Now choose Layer Styles. This is your styles folder.

(In Vista, the path is: C:\ProgramData\Adobe\Photoshop Elements\6.0\Locale\

As a shortcut for the future, you may want to put the Photo Creations folder on you desktop for easy Access. To do this, go back to the Photo Creations folder. Right click it and choose Send to>Desktop.

3. Now that you are in the layer styles folder, you can right click on a blank space in the window and choose paste.

Alternatively, if you can see both windows you can simply drag the style from one window to another. *Note that this method moves the file from it's original folder into the styles folder, instead of only copying it.*

1. Open the folder where the layer style was downloaded and extracted.
2. It may fill the whole screen. If it does, you'll need to Restore Down that window. At the top of the window, click the little double square icon between the dash and the x. This should make the window smaller. You can also resize the window by dragging one of the corners of the window.
3. Now find the styles folder, mentioned before, at:  
C:\Documents and Settings\All Users\Application Data\Adobe\Photoshop Elements\6.0\Locale\en\_US\Photo Creations\layer styles

Follow the same steps to Restore Down this Window.

You should now be able to see both Windows open on the screen.

4. Click in on the desired layer style and drag it into the layer styles folder. Note: This method will cut the file from the initial folder, not copy it.

That's it. You're finished. Remember to restart Photoshop Elements, if you haven't shut it down to access the styles or you won't be able to use the files.

