

Create a Button in Photoshop Elements

By LaWanna Desjardin

LDesjardin@gmail.com

www.desjardindigitaldesigns.com

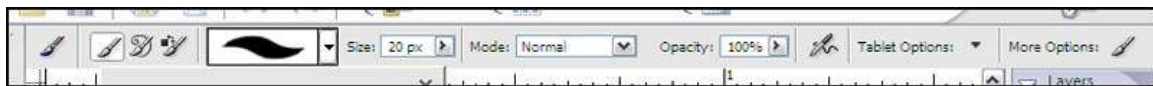
This tutorial will demonstrate how to create a button like the one below using the built in features of Photoshop Elements. This tutorial was written for PSE 3 but should work in other versions as well.



1. First we need to create a button shape. Using the Ellipse Shape Tool. Draw out a circle of an appropriate size, perhaps a half-inch. Fill the circle with your choice of colors using the paint bucket too.

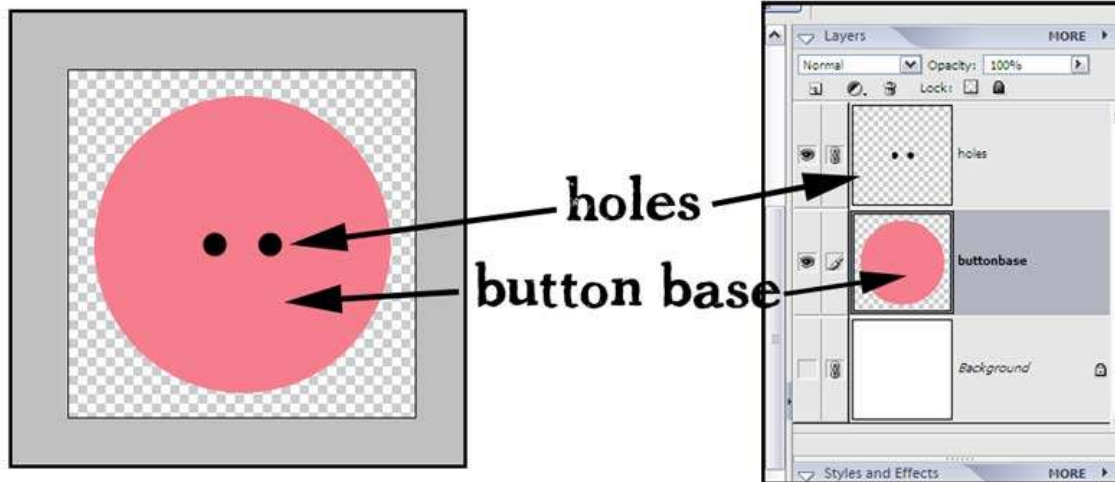
2. Now we need to make holes in our button. Before we do this we'll need to simplify the button shape. Right click *beside* the layer thumbnail and choose Simply layer.

3. Now make a new layer, but choosing Layer/New/Layer from the toolbar. Choose the brush tool from the tool box. It will look something like the image at the right. Look in the Options Bar that will appear beneath the main menu. From the drop down menu, choose a small, hard brush. I chose the Hard Round Brush (19) from the default brushes.

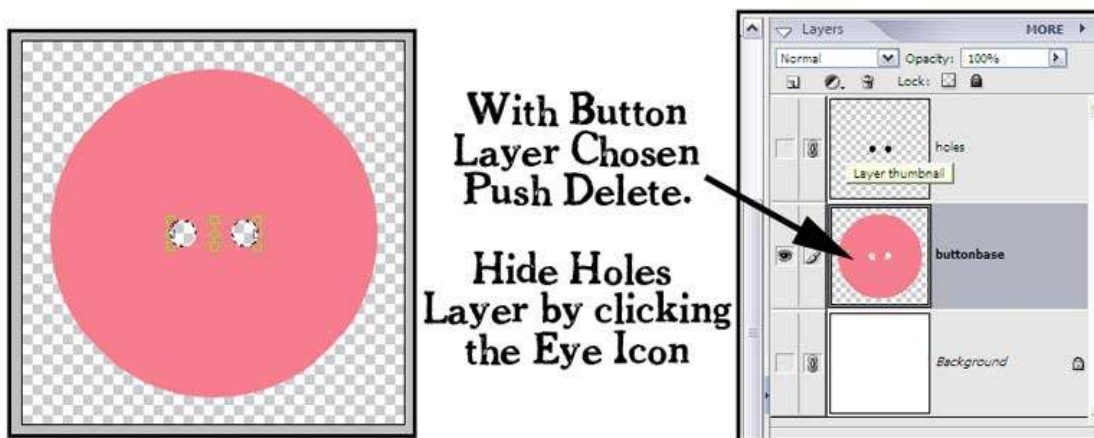


4. In the new layer, click once for each hole you need. (The color doesn't matter, but black shows up best). Try to make the holes align with each other. When you are done, use the move tool, along with the arrow keys to center the holes and the button base. (If you haven't downloaded Grant's Tool and Alignment Tools yet, now is an excellent time. You can find them here at

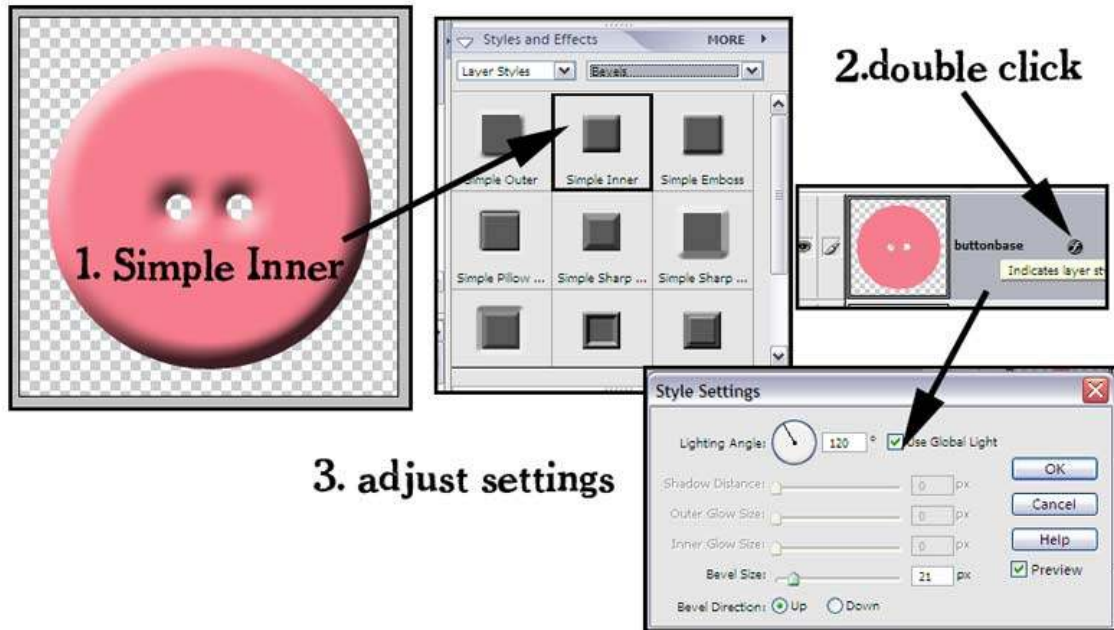
<http://www.cavesoffice.org/~grant/Challenge/Tools/Files.html>)



5. Now you are going to use the “holes” to delete a portion of the circle. Cntrl+Click on the *layer thumbnail*. This will put “marching ants” around the black holes layer. Now hit delete. Now you can discard the holes layer. You won’t need them any more.



6. Next you are going to add a bevel to the new button shape using Layer Styles. Make sure the layer styles palette is showing by going to Windows and checking that *Styles and Effects* is checked.
7. In the Layers and Effects Palette, choose styles from the left drop-down menu and bevels from the right drop down menu. With the button layer active, choose Simple Inner. You should immediately see the change, but you will probably want to adjust it.
8. Now in your layers palette, you should see a small circular icon beside the layer name (this may look different depending on the version you are working in.) Double click this icon and a style settings dialog box will pop up. My settings are: Lighting Angle: 120/Bevel: 120. However, you may want different settings depending on the size of the button. (This button is an inch in diameter for easy viewing so your bevel will probably be smaller.)



9. Now you may want to add a little gloss to your button, like I do. To do this you will need to duplicate the main layer (Layer/New/Layer in the toolbar.) You will also need to clear the layer style we applied, but only from the duplicate layer. To do this, right click beside the layer thumbnail and choose *Clear Layer Style*. (Please note, the bottom layer should retain its Layer Style.)

10. Now with the new duplicate layer active, go to the Styles and Effects Palette. From the Right Drop Down Menu, choose, Wow Plastic and select Wow Plastic Clear. Your button should look similar to the one below, but down worry. We'll adjust that.

