



Fixing Pet Eye in Photoshop Elements 6

by LaWanna Desjardin

www.desjardindigitaldesigns.com

Ldesjardin@gmail.com

We all love our pets and many of us want to photograph and scrapbook about them – after all they are members of our families. But one problem that always seems to plague photos of pets is the dreaded pet eye – that whitish, greenish or reddish glow that makes our beloved pets look demonic when a camera flash is used. Here's a quick tutorial to show you how to fix that problem using Photoshop Elements 6.

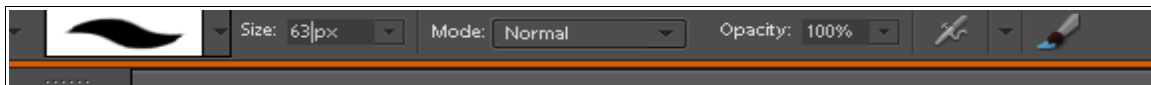
1. Before you do anything, duplicate your image so that you won't overwrite the original. Go to File>Duplicate.
2. Here is the photo we are working with. As you can see, they eyes are strongly white and need to be toned down a lot.



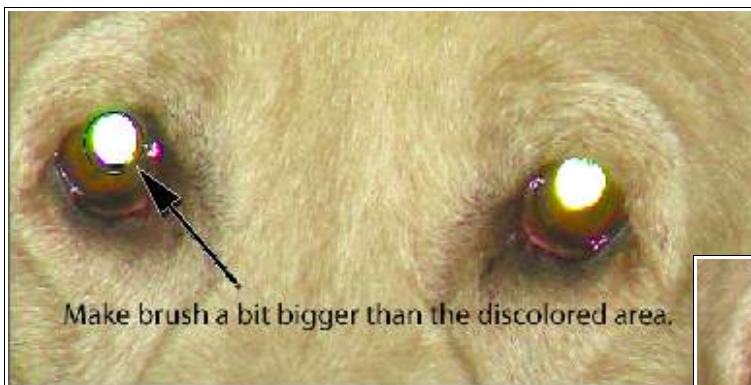


3. First we are going to zoom in to see the eyes up close. Choose the magnifying tool from the tool box. Then click several times to zoom in. To zoom out hold down the Alt key as you click. I'm working at a magnification of about 66.7%.

4. *First Create a New Layer; Layer>New > Layer.* Now choose a brush tool from the tool box. You'll find the brush options in the option bar, just below the standard tool bar. (See screenshot below.) Choose a harder edged brush. I like number 19 from the default brush set. Adjust the brush to fit over the discolored area and a little overlap at the edges. You can use the bracket keys to increase] or decrease [the size of the brush.



5. Now choose a color that is a much darker shade of the surrounding eye. This dog's eyes are brown, so I'm using a very dark brown – almost black. Change this color in the color picker, making it your foreground color.
6. Now click on the discolored part of the eyes once. Make sure you're working on a new layer. Your photo will look a little strange now, but we'll get to that in a moment.



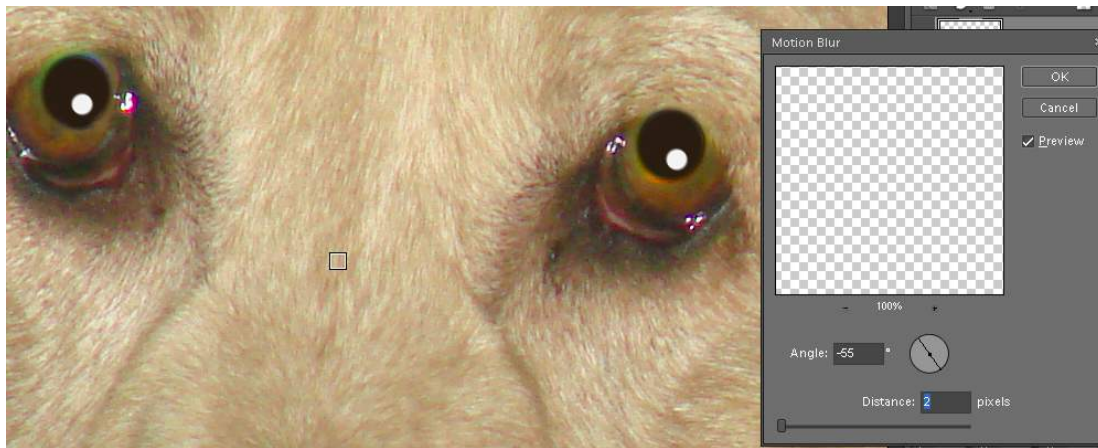
5. Now we are going to blur this new pupil layer a bit to make it look more natural. Go to Filter>Blur>Gaussian Blur. Choose a radius that will soften the edges of the dark dots. I used a radius of 2.3.



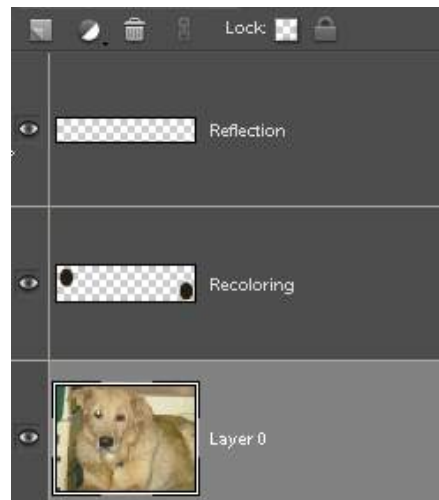
6. Now we are going to add a reflection back into the eye. *Again, make a new Layer, Layer>New>Layer.* Select the brush tool again from the toolbox. Again, choose a hard brush from the menu. This is only a small point of light so a small brush is appropriate. I'm using a brush at about 20. Now choose the color white for your foreground color. Now click inside the pupil of the dog. Usually the point of light will be off-center. Take into account where the animal is looking as well as how it is holding it's head. In my example, the dog is looking at the camera, but has his head down, so I put the point of light near the bottom of the pupil. You can see the effect below.



7. Now this is not absolutely necessary, but I like to add a slight blur to the reflection too using Filter>Blur>Motion Blur. Set a very small distance. You can also use Gaussian blur for this with a small radius. In addition, you may opt to adjust the opacity in the layers palette.



Here is a shot of my layers palette.



Now here is a **before and after** photo of the dog.

