



Setting Up a Home Network in Windows XP

by LaWanna Desjardin

www.desjardindigitaldesigns.com

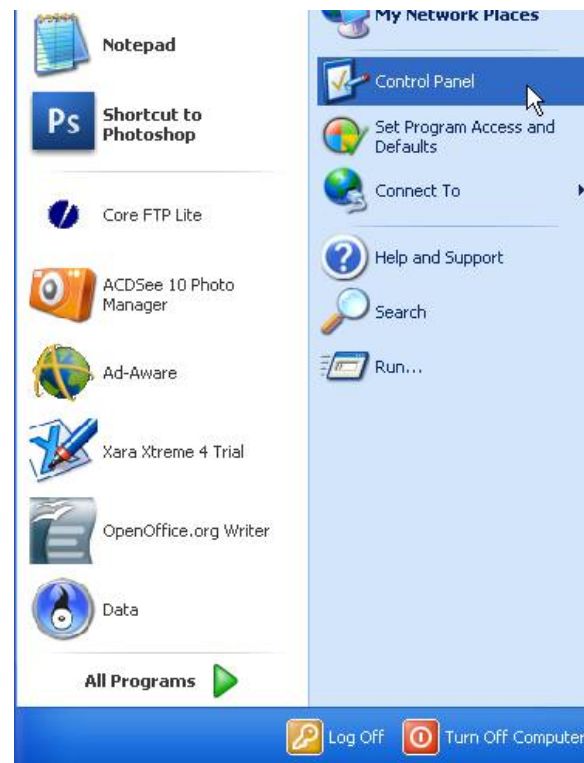
Recently, while trying to get organized, I purchased an external hard drive to store my digital kits and photos. However, it became a problem lugging the EHD around with my laptop. The best solution, I thought was to hook the EHD to my desktop and then access it over a network. The problem was that I had no idea how to set up a home network so that the two computers could share files. A Google search only led to more confusion and incomplete answers. I did finally manage to piece together the answers I found and successfully set up a network through my router. I thought I'd save you the trouble that I went through and share with you what I did.

Please keep in mind that I am not a computer expert. However, two online friends have used these instructions to set up home networks successfully. One of them even used Vista on one machine and XP on the other. Also, these instructions assume you already have a router and you're sharing an Internet connection among two or more computers.

The first thing you need to do is to choose which computer will be the host. Usually this is the computer that is hooked to the router.

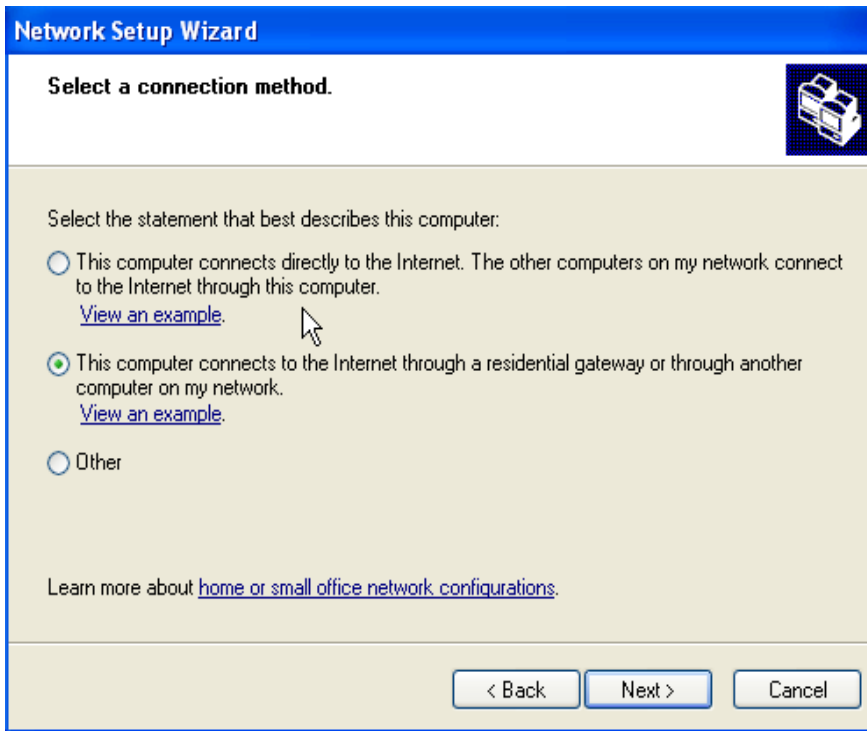
Setting up the Network with Network Setup Wizard

1. Go to your Control Panel. Find it by going to your Start Menu and Selecting it there.
2. In the Control Panel, choose Network Setup Wizard. The icon looks like this:



3. Click on Network Setup Wizard and follow the prompts.

a.) When you get to the prompt that says Select a connection method, make sure to select the second choice - "This computer connects to the Internet through a residential gateway or through another computer on my network."



b.) You will be prompted to give the computer a description and a name. I gave mine a description of Bedroom Computer and the name of Michael (the default is Michael as my husband named it.) This will be unique to this computer.

c.) You will also be prompted to give the Workgroup a name. A workgroup refers to the group of computers that you need to be networked together. **This will be the same for all computers when you are finished. Please make an exact note of this name including capitalization.** I named mine Desjardin.

d.) Choose to Turn on Printer and File Sharing.

e.) During this process you will be asked to Create a Network Setup Disk. If both machines are running XP, you don't need to do this. However, if one of the machines is running a different operating system (Vista, Leopard, etc), then you will need to create this "disk." It is really just the utility Network Setup Wizard. It is pretty small and you can put it on a flash drive or a memory card if you have one handy.

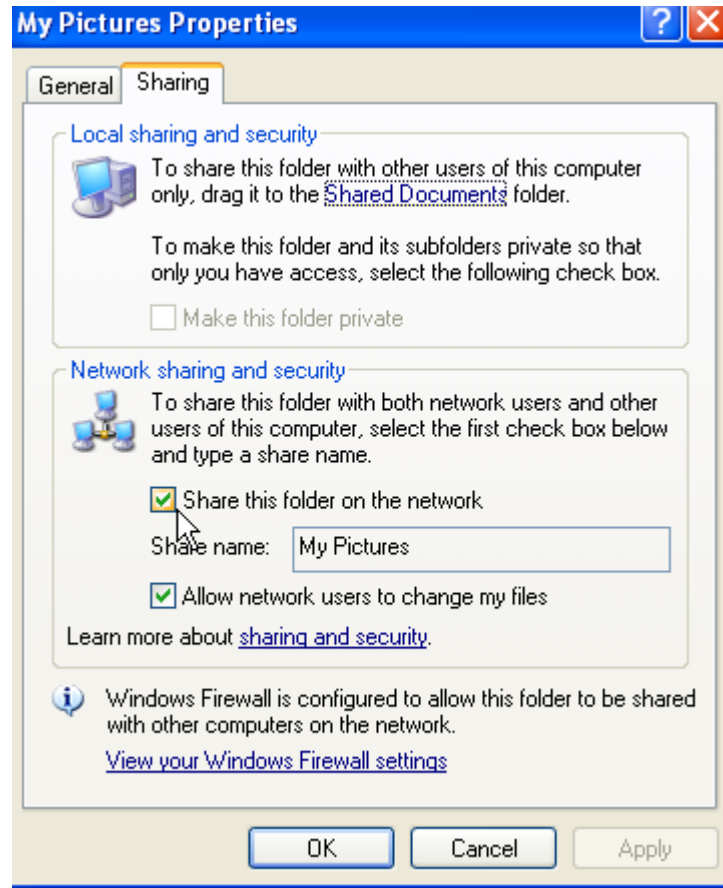
If both/all machines are running XP, you will just repeat the Network Setup Wizard as you've done here.

f.) Go on through the end of the wizard until you've completed it. You'll be prompted to restart.. Restart and reconnect to the Internet.

Setting up Folder Sharing through the Network

You want to share files between machines right? Well now you need to tell the Network which folders you want to share. You'll need to do this step for each of the folders/files you want to share. By way of example, I'm going to choose to share the My Pictures folder. (Note: The process is the same if you are sharing an EHD.)

1. Right click the folder and choose Properties. Now choose the Sharing Tab. (If you are choosing to share an EHD, you may need to click past the warning.) Under Network Sharing and Security, click "Share this folder on the network." If you want to be able to edit these files/folders on any machine, click "Allow Network users to change my files."



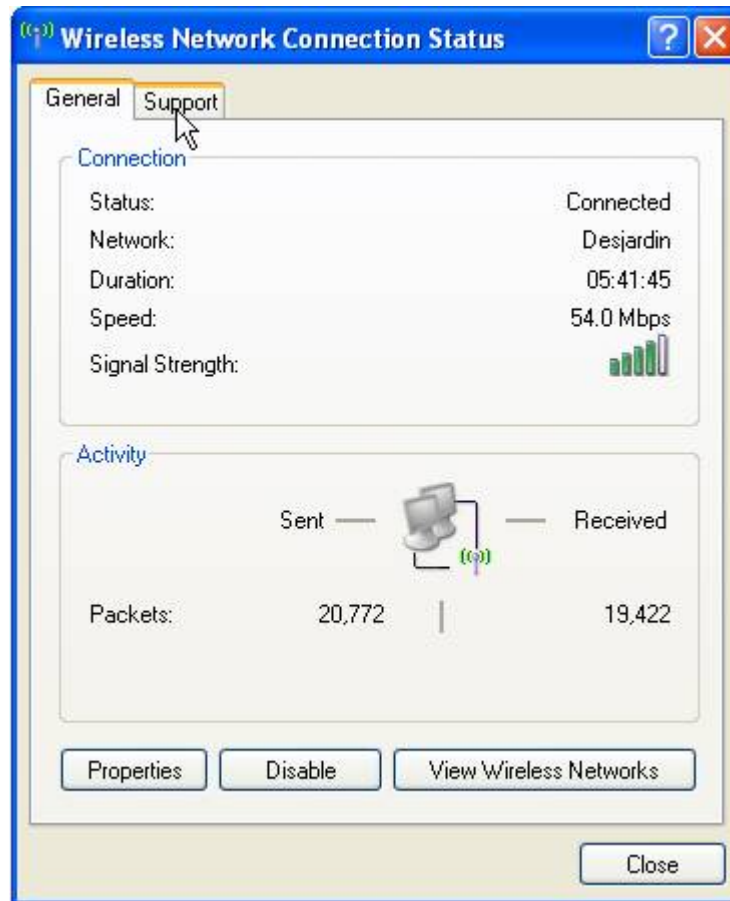
Repeat this process for any files or folders you want to share.

Note: I'm told that in Vista, you must change these permissions from the main folder and the sub-folders. So if you want to share a sub-folder within My Pictures. You have to set the permissions for both.

Finding the IP Address of your Computer

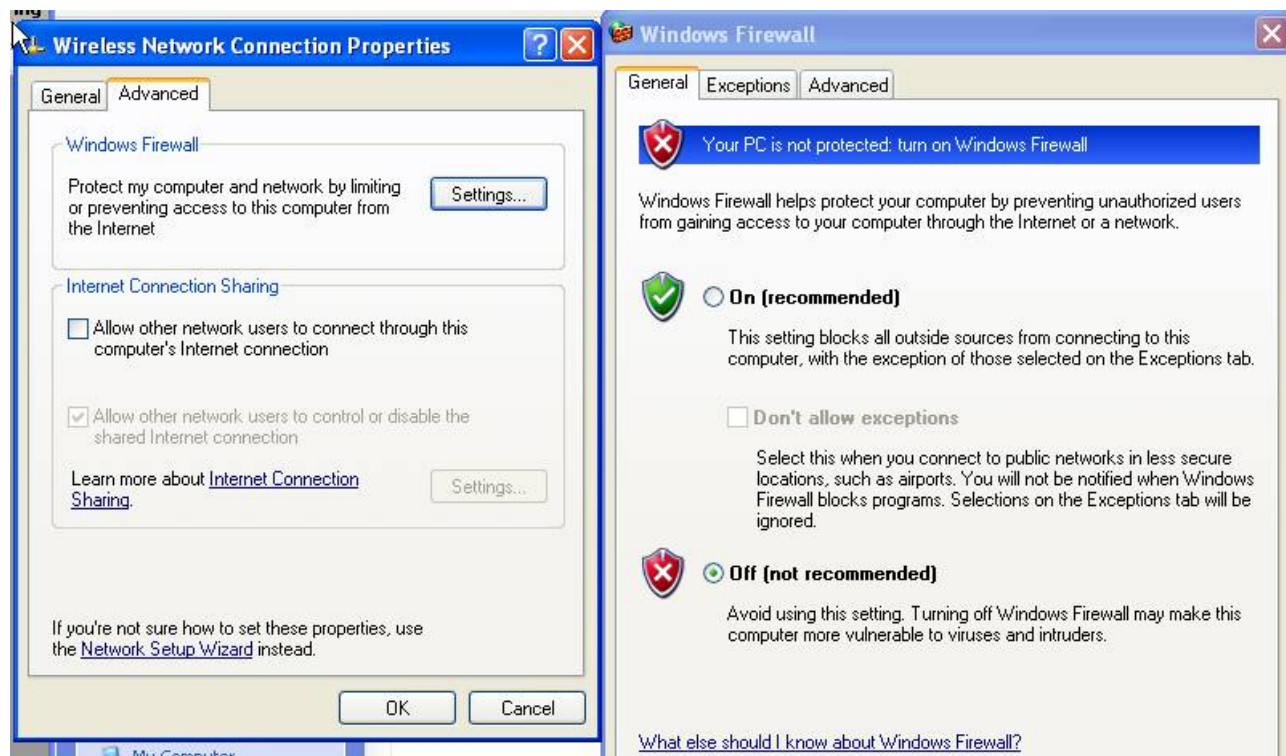
When the time comes to complete this process, you are going to need the IP Address for the host computer. Here's how you will find it:

1. Go to the Control Panel and Select Network Connections. Find the Wireless Network Connection.
2. Right Click this Connection and Select Status. In the Support Tab, you will find the IP Address. Make a note of this number. You'll need it.



Now you will need to shut off your firewall. I have ZoneAlarm so I shut that off. You may also have to go and shut off the Windows Firewall.

1. Go to Network Connections in the Control Panel. Click on your connection, and choose properties.
2. Select the Advanced Tab. Under Windows Firewall, choose Settings. In this option, choose to shut Off the Windows Firewall. Click OK when you are finished here.



The reason that you are shutting off the Firewall is because it will prevent your computers from communicating with each other and this will not work otherwise. Don't worry though. You will be able to set up the firewall so that the machines will recognize each other.

Setting up the Client Computer

Remember how you ran the Network Setup Wizard on the host computer. Well, now you are going to repeat this process on the Client Computer. If you are using another XP machine, refer to the steps at the beginning to start the wizard.

If you are using a non-XP operating system, you should have made a Network Setup Disk when you set up the network on the host computer. You probably put it on a flash drive. You'll need it now. So plug it in and follow the prompts. Remember this is the same as the Network Setup Wizard so you should be fairly familiar with it.

Now all you have to do is follow the prompts again.

1. When prompted for the Network Connection, choose the Ignore Disconnected Hardware option. You have no wires connected to the laptop, remember?
2. You'll be prompted to give this computer a name. This name will be different from the host computer. I named mine Laptop.
3. You'll also be prompted to name the Workgroup. Remember you made a note of this. Make sure this Workgroup is the same as the Workgroup name you gave on the host computer setup.
4. Choose Yes, when asked if you want to "Use the existing Shared Connection."
5. Choose Turn on Printer and File Sharing.
6. When prompted to create a Network setup disk, choose no, unless you have more computers to setup.
7. Finish the process and restart it when prompted. When it has restarted, make sure the Internet connection is active.

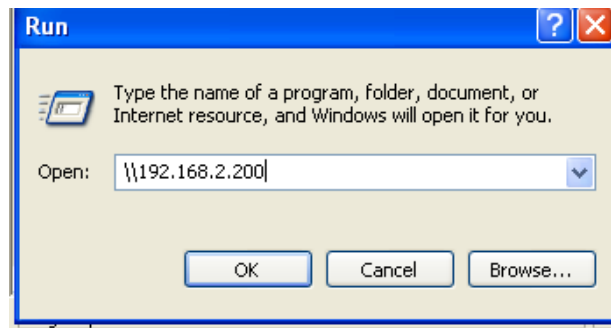
Now you need to make sure to turn off the firewall on this client machine as well. Both your own firewall program and the Windows Firewall. Firewalls on both machines should be turned off.

Remember that IP Address you wrote down when you were still working on the host machine. Now you need it to set up the computers to communicate with each other.

1. Click Start>Run.
2. Type in \\ and then type in the IP Address of the host computer. (BTW, those are backslashes, found on the key above your Enter Key). For example: \\192.168.2.200
3. Choose OK.

After a few moments, you should see a window pop up with your shared files. I made a shortcut and put it on my desktop.

If you get an error message, go back and make sure all the firewalls are off and try it again.



A Note about Firewalls:

You should now be able to turn on your Firewall again. However, you still need to tell you firewall to let the computers communicate. You'll have to refer to the website of your firewall to find the instructions for doing this. In ZoneAlarm, these are the instructions I used. The steps are probably similar in other Firewall systems.

<http://www.helpmerick.com/node/1125>

Here are the instructions for that website, in case you cannot access it.

Double-click the ZoneAlarm icon by the clock in the system tray

1. Click the **Firewall** option.
2. Click the **Zones** tab.
3. Click **Add**.
4. Click *IP Range*
5. Make sure the Zone says "Trusted"
6. Type in the lowest IP address on your network (like 192.168.0.100). You can find this out by RIGHT Clicking on your Wireless or LAN connection in the Network Connections found in the Control Panel)
7. Type in the highest IP address on your network. Make this number about 15-20 points higher than the fourth digit of the previous number. If our example as above, then use 192.168.0.120 for this number.
8. Type "Home Network" or something similar in the Description box
9. Click *OK*
10. Click *Apply* on the Zones screen
11. Close ZoneAlarm